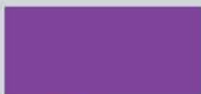


VISION 2022

**LOVE
LIVE
TELL**



PARISH COUNCIL Executive Summary

'We love because God first loves us'

For over 150 years our parish has served the Redlands. In fact, Old St Paul's was one of the first buildings in the district and one of the first churches in Queensland. At the consecration service in 1876 Bishop Matthew Hale began his address by saying 'The completion and consecration of this church is one of the steps which have been taken toward the diffusion or spreading of the knowledge and practise of Christianity.'

From the beginning, our parish was missional, focused on sharing the Good News of the Gospel in service to our wider community. We at East Redland Anglican Parish (ERA) remain committed to continue that tradition begun in 1876.

The Redlands of Bishop Hales day is a far cry from the Redlands of 2018. Once a rich agricultural region, we are now a burgeoning bayside urban city. As the landscape changes so too must our approach to mission. Vision 2022 is our plan for the next chapter in the life of this Parish, shaped by the core values of Love, Scripture, Prayer, Discipleship and Hospitality: a vision for a responsive and sustainable faith community dedicated to service and mission. Our goal is to see 'a just world shaped by the love of God.'

We commend this vision to you that we may continue to be a source of grace and blessing in the East Redlands community.

A wooden cross is positioned diagonally across the frame, resting on a rough, grey stone surface. The cross is made of light-colored wood with visible grain. The background is a soft-focus image of the stone and the cross itself, creating a sense of depth. The text is overlaid on the left side of the image.

OUR MISSION

**TO MAKE
DISCIPLES OF
JESUS CHRIST
BY SHARING THE
LOVE OF GOD.**

The background of the entire page is a photograph of ocean waves. The waves are in various stages of breaking, with white foam visible. The colors are muted, with shades of grey, blue, and white. The text is overlaid on this background in three distinct purple rectangular boxes.

LOVE - WHY

We love because God first loved us

LIVE - HOW

Seeking a just world shaped by the love of God

TELL - WHAT

Being active disciples of Christ

A wooden cross with a light-colored, wavy-grained wood is positioned centrally, resting on several large, grey, textured stones. The background is a soft-focus grey, and the entire image is framed by a light grey border.

OUR VISION

**A JUST WORLD
SHAPED BY THE
LOVE OF GOD.**

OUR CORE VALUES

LOVE
SCRIPTURE
PRAYER
DISCIPLESHIP
HOSPITALITY



LOVE

Scripture tells us that God broke forth in the form of Jesus as the divine expression of unconditional love. New Testament love, which in the original Greek is 'agape', is a love that seeks and desires only the wellbeing of another. Agape is the foundation upon which we gather as community and seek to transform the world around us by sharing this love with others.

SCRIPTURE

The Bible serves as the guiding light of our community, ministry and mission. As those who seek to live gospel-centred lives, we are guided by the Word of God in all matters of faith, life and ministry. We prayerfully study Scripture as God's authoritative source of spiritual nourishment and seek to live out the teachings of Scripture in our daily lives.

PRAYER

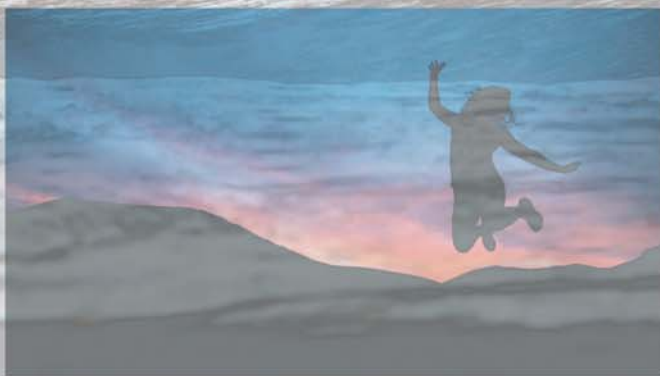
We are people of prayer. As a faith community, we dedicate our lives to prayer, both individually and corporately. Through prayer we discern God's will for all aspects of our lives and ministry. Through prayer we depend on God's faithfulness to us as we seek to serve as Christ's hands and feet in our world.

DISCIPLESHIP

We seek to make disciples of Jesus Christ by sharing the love of God. Through Scripture, Jesus commissions us to make disciples of all the nations, to invite and welcome all into the embrace of God's grace. Making missional disciples underpins our ministry as a faith community.

HOSPITALITY

Throughout his earthly ministry Jesus ate with sinners. He welcomed children with open arms. He shared meals and conversation with the marginalised, the oppressed, the dispossessed. Jesus embraced everyone with an open heart, an open mind and open arms. Our community is shaped by this kind of inclusive hospitality.



**Jesus said
'I am the light of the
world. Whoever
follows me will never
walk in darkness but
will have the light of
life.' John 8:12**



OUR VISION TOWARDS 2022

What can you expect of us:

- Engaging and meaningful worship.
- Opportunities to be transformed more into the person God created you to be.
- A safe place where your unique gifts are recognised and celebrated.
- An innovative community where your God-given gifts are expressed in the service of others and the making of a better world.
- A place of belonging where your unique spiritual journey will be honoured.
- A community that values your input and seeks to give voice to your hopes and dreams.
- A place where your contribution of time, talents and treasure are valued and invested in the building up of God's Kingdom through the making and nourishing of disciples of Jesus Christ.



What we expect of you:

TO WORSHIP

Sunday is the Day of the Lord. Sunday is a day dedicated to worship and the gathering of community. We expect all members of our parish to commit to attend regular Sunday worship unless otherwise unable due to illness, infirmity or travel. Gathering to give thanks for God's unconditional love and life-giving grace is integral to our lives as Christians and to our life-long journey as disciples of Christ.

TO GROW

The Christian faith is a life-long journey of discovery and exploration. To truly walk in Christ's footsteps is to be open to an organic, transformative life of growth and development. The word 'disciple' in Biblical Greek literally means "one who is learning, a student, a pupil". As such, we expect each member of our community to commit to an ongoing journey of faith formation and spiritual growth by participating in at least one program of faith formation each year. We also expect each member to actively participate in at least one Faith Circle. In making this commitment, we foster the growth of all those who belong to our community as much as ourselves, stimulating the continued health of the Church universal.



What we expect of you:

TO SERVE

Jesus said, "The Son of Man came not to be served, but to serve" (Mark 10:45). The essence of the Christian life is to serve God and one another. The Church is diminished when we overlook this core task. We are called by Christ to serve individually and corporately as the Church of God. This is how we witness to God's supreme grace and demonstrate that the Church is the hands and feet of Jesus in our world. We believe wholeheartedly that every parishioner, every disciple, has been blessed with God-given gifts with which to honour God and serve in creation. We expect every member of our community to serve the parish and the wider City of Redland by contributing to at least one of our parish ministries.



What we expect of you:

TO CONNECT

At its core the Christian faith and the Church itself are relational. Our God calls us through Christ into an eternal relationship with each other and with God. Our community is not simply a collection of individuals. Rather, the strength of our parish and our ministry in the world rests on the power of our unity as the body of Christ. A Christian community is one where we are truly accountable to one another and accountable for one another. We expect every member of our parish to contribute to the creation and sustaining of our community, a community underpinned by our values of Love, Prayer, Discipleship, Hospitality and Scripture.



What we expect of you:

TO GIVE

We expect all parishioners to give generously of their time, talents and treasures. The Prayer Book reminds us that 'All we have is Yours, and of your own we give you'. The richness of our community emerges from the gracious generosity of its members. In terms of financial resources, we expect members to offer what they are able in proportion to their personal circumstances. A commitment to give of time, talents and treasure is primarily an expression of thanksgiving to God who has blessed us abundantly. It also enables the funding of the daily operations of the parish which in turn grows the mission and ministry of our community. The more disciples we make, the more God's love is shared with the world.



CORE MINISTRIES

Drawing upon the purpose of the church as outlined in the early chapters of the Book of the Acts of the Apostles, the following five 'core ministries' of the church have emerged in modern times. Viewed through the prism of the Great Commandment (Matthew 22:37-40) and the Great Commission (Matthew 28:19-20), these core ministries are:

WORSHIP

MISSION

DISCIPLESHIP

FELLOWSHIP

MINISTRY



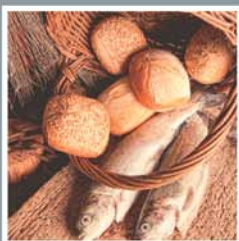
CORE MINISTRIES

WORSHIP



This is an obvious one for Anglicans. We gather for worship regularly. While our primary act of worship is Holy Communion, our tradition offers a rich breadth and depth of worship expression and styles. Worship can be corporate as well as in prayer gatherings, parish or group meetings and times of praise in small groups.

MISSION



Mission is the proclamation of the Good News of God's love as revealed in Jesus, and the salvation offered through his cross and resurrection. Mission seeks to introduce Jesus to those who do not currently share a relationship with him; it brings people into an encounter with Jesus Christ and leads them to a personal decision to trust and follow him as his disciple. To nourish this relationship, the church seeks to respond through the sacrament of baptism. While mission is largely focused outside the church, it also involves the reigniting of the faith among existing Christians.

CORE MINISTRIES

DISCIPLESHIP



Discipleship is the lifelong journey entered into by those who have committed to their Baptism. It is an intentional journey of commitment to study the Way of the Messiah in thought, word and deed. This includes introductory courses in Christianity for those new or returning to the church, along with an ongoing commitment to grow in faith by prayerfully studying the scriptures, participating in a community of faith and engaging with faith formation courses, programs and retreats. Discipleship enables a unique opportunity to discern one's own giftedness and offers various channels for those gifts to be expressed in service to God and God's church.

CORE MINISTRIES

FELLOWSHIP

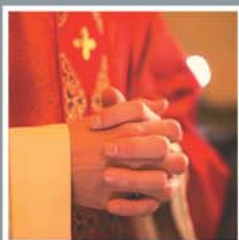


In the New Testament, biblical authors referred to communities of faith as *koinonia*. *Koinonia* is the common life shared by a community where people are known and loved. This kind of community offers warm hospitality and supports its members in their call to discipleship. It may involve socialising, but it must not be reduced to it. True fellowship happens when parishioners care for each other and are accountable to and for each other. Christian fellowship provides a unique sense of belonging and purpose.



CORE MINISTRIES

MINISTRY



The measure of a faith community is not how many people attend Sunday Worship, but rather the impact its members have in the service to others in the broader community, especially those on the margins of society. Christian ministry is to serve. This includes ministry within the life of the parish so that it can function and form its members. However, in a parish where the mission of God holds fast, ministry is focused on going out and serving those in need, those who might not yet belong.



OUR VISION TOWARDS 2022

**AS WE SEEK TO ENABLE OUR MISSION OF
MAKING DISCIPLES OF JESUS CHRIST BY
SHARING THE LOVE OF GOD,
EAST REDLAND ANGLICANS VISION
2022 LOOKS LIKE THIS:**

2022

VISION

EAST REDLAND ANGLICAN

WORSHIP

1. Worship that responds to the needs of the diverse communities we serve; Reflecting the depth and breadth of Anglican tradition, expressing our mission and fostering our vision
2. Welcoming faith communities nourished by trained Hospitality teams
3. Well-equipped lay ministry teams
4. Music that is inspiring, uplifting, responding to the culture of each faith community
5. Preaching grounded in contemporary biblical and theological scholarship
6. Midweek and occasional services for the building up of God's people

MISSION

1. Being an invitational church within the wider Redlands community
2. An annual schedule of events that encourage questions about faith e.g.: Theology on Tap, Got Questions?
3. Intentional Faith Circles e.g.: Theology and the Arts, New Disciples
4. Cafe Ministry
5. Establish partnerships with community organisations such as Redlands Centre for Women, Night Ninjas, Foodbank, Rotary, Men's Shed and Redland City Council
6. Outwardly focused, Jesus-centered missional presence in the wider Redlands community aimed at meeting local need

DISCIPLESHIP

1. Every member of the parish attends worship regularly, participates in at least one discipleship course each year and belongs to at least one Faith Circle e.g.: The Bible Project, Christian Meditation, Justice Group
2. Each new member of the parish participates in an introductory discipleship course e.g.: Christianity Explained
3. There will be Parish wide Seasonal Studies for Lent and Advent, often with ecumenical partners
4. Preaching is geared towards the teaching and equipping members of the parish for ministry and mission

2022

VISION

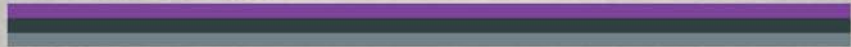
EAST REDLAND ANGLICAN

FELLOWSHIP

1. As an inclusive church, we practice the radical hospitality of Christ - all are welcome in the East Redland Anglican community
2. Where ever possible, there will be shared morning tea after each service of worship
3. Continue our wide variety of community social gatherings such as Ormiston Trivia, Redland Bay Mother's Day BBQ, St Paul's Cent Auction, Men's Beer, Blokes & BBQ
4. Shared meals as part of Faith Circles

MINISTRY

1. Ministry initiatives that embrace the 'other' as an equal member of the body of Christ
2. Equip, empower and encourage lay ministry drawing upon each person's gifts
3. Dedicated and intentional ministry for men, women and children e.g.: Men's Group, Mother's Union, Messy Playtime
4. Hospital chaplaincy through lay Chaplains and Clergy Visitation
5. Religious Instruction in local schools through trained facilitators
6. Pastoral Care Ministry - e.g.: Home Communion, end-of-life, baptisms, weddings
7. Prayer Ministry - Lighthouse Prayer Team, prayer chains, parish prayer team
8. Social impact enterprises
9. Care of creation initiatives
10. Annual remembrance services for those loved and lost



STAFFING GOAL

1. Three full time stipended priests
2. Half time Children and Families Ministry Coordinator
3. Full time, executive level Parish Manager

STRATEGIC

OBJECTIVES

- 1 WORSHIP
- 2 MISSION
- 3 DISCIPLESHIP
- 4 FELLOWSHIP
- 5 MINISTRY

GUIDING PRINCIPLES

1. THE PARISH CONTINUES TO GROW IN ITS UNDERSTANDING AND PRACTICE OF INCLUSIVITY AT ALL LEVELS OF MINISTRY AND MISSION.
2. THE PARISH USE SOCIAL ENTERPRISE PRINCIPLES WHEN ESTABLISHING AND DEVELOPING A BUSINESS CASE FOR IDENTIFIED INITIATIVES
3. THE PARISH CONTINUES TO WORK TOWARD BEING ENVIRONMENTALLY FRIENDLY IN ALL ASPECTS OF MISSION AND MINISTRY.
4. THE PARISH EMBRACES FAIR TRADE VALUES AND PRACTICES.

1. ESTABLISH WORSHIP TEAMS AS APPROPRIATE TO ASSIST WITH THE DEVELOPMENT OF SERVICES.

2. IDENTIFY, LICENCE AND TRAIN INCREASED NUMBER OF LITURGICAL ASSISTANTS E.G.: WORSHIP AND PASTORAL.

3. EQUIP AND ENCOURAGE INCREASED NUMBER'S OF PARISH PASTORAL CARER'S.

4. INVITING, WELCOMING, ACCESSIBLE SPACES OF WORSHIP.

5. APPROPRIATE TECHNOLOGY TO FACILITATE INCLUSIVE WORSHIP.

6. CONTINUE TO DEVELOP HOSPITALITY TEAMS FOR EACH CENTRE.

7. INCREASE AVERAGE SUNDAY ATTENDANCE ACROSS THE PARISH BY AT LEAST 15% PER CONGREGATION PER YEAR.

1. ESTABLISH A PARISH MISSION TEAM TO CREATE, LEAD AND FACILITATE OUTWARDLY FOCUSED MISSIONAL EVENTS AND OPPORTUNITIES E.G.: THEOLOGY ON TAP, GOT QUESTIONS? ETC.

2. ESTABLISH A RANGE OF PARISH FAITH CIRCLES FOCUSED ON BOTH INTERNAL AND EXTERNAL MISSION AND GROWTH E.G.: THEOLOGY AND THE ARTS, NEW DISCIPLES.

3. DEVELOP AND IMPLEMENT A COMMUNITY ENGAGEMENT STRATEGY.

STRATEGIC OBJECTIVES

3

DISCIPLESHIP

1. ESTABLISH A PARISH DISCIPLESHIP TEAM WITH THE EXPRESS PURPOSE OF CULTIVATING A PARISH-WIDE CULTURE OF PROACTIVE DISCIPLESHIP, LIFE-LONG LEARNING AND DISCIPLINE OPPORTUNITIES.
2. ESTABLISH A NETWORK OF PARISH FAITH CIRCLES DRAWING UPON A VARIETY OF THEMES AND APPROACHES.
3. LAUNCH CHRISTIANITY EXPLAINED AND INVITE ALL EXISTING PARISHIONERS TO ATTEND A CHRISTIANITY EXPLAINED SMALL GROUP GATHERED OVER A HOSPITALITY EVENT.
4. IMPLEMENT AN INTENTIONAL PROCESS OF INVITING AND PROACTIVELY ENCOURAGING ALL NEW MEMBERS TO ATTEND CHRISTIANITY EXPLAINED, JOIN A FAITH CIRCLE AND PARTICIPATE IN THE WIDER ACTIVITIES OF THE PARISH.
5. ENSURE THAT SEASONAL STUDIES ARE OF A HIGH QUALITY, ENGAGING AND FOCUSED ON DISCIPLESHIP.
6. ENSURE A CONNECTION BETWEEN THE PARISH DISCIPLESHIP TEAM AND THE PARISH MISSION TEAM.

1. ESTABLISH A PARISH FELLOWSHIP TEAM TO COORDINATE PARISH FELLOWSHIP OPPORTUNITIES, LEVERAGING EXISTING ACTIVITIES AND UNIFYING THE PARISH BEHIND A VISION OF INCLUSIVE HOSPITALITY. THIS TEAM WOULD ESTABLISH AND MAINTAIN CONSISTENCY IN FELLOWSHIP ACTIVITIES ACROSS THE PARISH.

2. ENSURE ALL FELLOWSHIP OPPORTUNITIES ARE CONNECTED TO AND FURTHER IN SOME WAY THE PARISH VISION AND MISSION.

3. ENSURE ALL FELLOWSHIP ACTIVITIES ARE GROUNDED IN PRAYER AND CONNECT TO DISCIPLESHIP OPPORTUNITIES

STRATEGIC OBJECTIVES

5

MINISTRY

1. ESTABLISH A PARISH MINISTRY TEAM TO EQUIP THE LAITY TO FULLY PARTICIPATE IN MINISTRY AND MISSION E.G.: TRAIN AND SUPPORT LAY MINISTERS, PASTORAL CARER'S, WELCOMER'S ETC.
2. CONTINUE TO FOSTER AND EQUIP AN OUTWARDLY FOCUSED, JESUS-CENTERED MISSIONAL PARISH CULTURE TO RESPOND TO LOCAL NEED.
3. PROACTIVELY SEEK OPPORTUNITIES TO MINISTER TO THOSE ON THE MARGINS OF SOCIETY I.E. THOSE WITH DISABILITY, ADDICTION, MENTAL ILLNESS.
4. INTENTIONALLY IDENTIFY, RECRUIT AND TRAIN PARISH MEMBERS IN COMMUNITY MINISTRY AND EQUIP THEM FOR MINISTRY IN THE WIDER REDLANDS REGION I.E. HOSPITAL VISITATION, SCHOOL-BASED RELIGIOUS INSTRUCTION, HOME COMMUNION, HOME VISITATION.
5. USE SOCIAL ENTERPRISE PRINCIPLES WHEN ESTABLISHING AND DEVELOPING A BUSINESS CASE FOR IDENTIFIED INITIATIVES.

MISSION ACTION PLAN

Vision 2022 is only possible with a robust, effective contemporary system of governance, administration, compliance and technology. Building this system is one of the core tasks of vision 2022. To be sustainable well into the future the development of this system must involve a cross section of parish membership.



MISSION ACTION PLAN

What	Who	When
Conservation Management Plan	Parish Property Coordinator, WH&S Coordinator, Centre Property Reps	December 2018
Capital Investment Plan	Rector, Assistant, Wardens, Parish Property Coordinator	December 2018
Stewardship	Parish Manager, Rector, Assistant, Wardens & Treasurer	Ongoing
Human Resources	Rector, Assistant, Parish Manager, Wardens	Ongoing
I.T. Architecture	Parish Manager, Rector, Assistant, Wardens	April 2018
Financial Administration - Management of Bequests	Treasurer, Parish Manager, Rector	Ongoing
Communications & Marketing	Rector, Assistant, Parish Manager, Wardens	April 2018 - & ongoing
General Administration - Parish Operations Manual	Parish Manager, Rector, Assistant, Wardens	December 2018
WHS	WH&S Coordinator, Parish Manager, Rector	Ongoing
Records Management	Parish Manager	Ongoing
Archives	Rector, Parish Manager, Parish Archivist	Ongoing
Social Enterprise	Assistant, Rector, Wardens	Ongoing

DISCIPLESHIP LIFE STAGES OUR PATHWAY

**POTENTIAL CONTACT
IN TOUCH**

BELONGING

EMBRACING GOSPEL

FOLLOWING IN JESUS

SERVING IN MINISTRY

LEADING MINISTRY

WHAT IS A SOCIAL ENTERPRISE?

A Social Enterprise is a business operating for a social purpose and will commonly have the following attributes:

- Social objectives are core to the purposes and focus of the enterprise.
- The majority of profits are reinvested back into the enterprise and are used to maximise the social impact.
- The enterprise is often supported through earned income, trade or commercial activities, grant income and or philanthropic income.
- In addition to a financial return, a social enterprise seeks to achieve measurable social or environmental impacts.

ERA MAP OVERVIEW

TELL - WHAT

LOVE - WHY

LIVE - HOW

MISSION STATEMENT

To make disciples of Jesus Christ by sharing the love of God.

"We love because God first

loved us."

1 John 4:19

VISION STATEMENT

Growing a just world shaped by the love of God

Proclaim the Good News of the Kingdom of God

Teach, baptize & nurture new believers

Respond to human need by loving service

Transform unjust structures of society, challenge violence of every kind and pursue peace and reconciliation

Safeguard the integrity of creation, and sustain and renew the life of the earth

Worship

Mission

Discipleship

Fellowship

Ministry

Sacraments

7 locations, 6

churches, 16

congregations

diverse worship styles

Pastoral Care Ministry

Women's Groups

Men's Groups

Inter-generational Groups

Seasonal Studies

Faith Circles

CYF (Children, Youth & Families)

Social Enterprise

Hospitality Ministry

Mission Group

Governance & Administration

NOTES

East Redland Anglican Parish
(Formerly Cleveland Anglican Parish)
4 Cross Street, Cleveland QLD 4163
PO BOX 2, Cleveland QLD 4163

Phone: (07) 3821 2443
W: anglicancleveland.org.au
E: office@anglicancleveland.org.au
ABN: 34 544 536 6793

